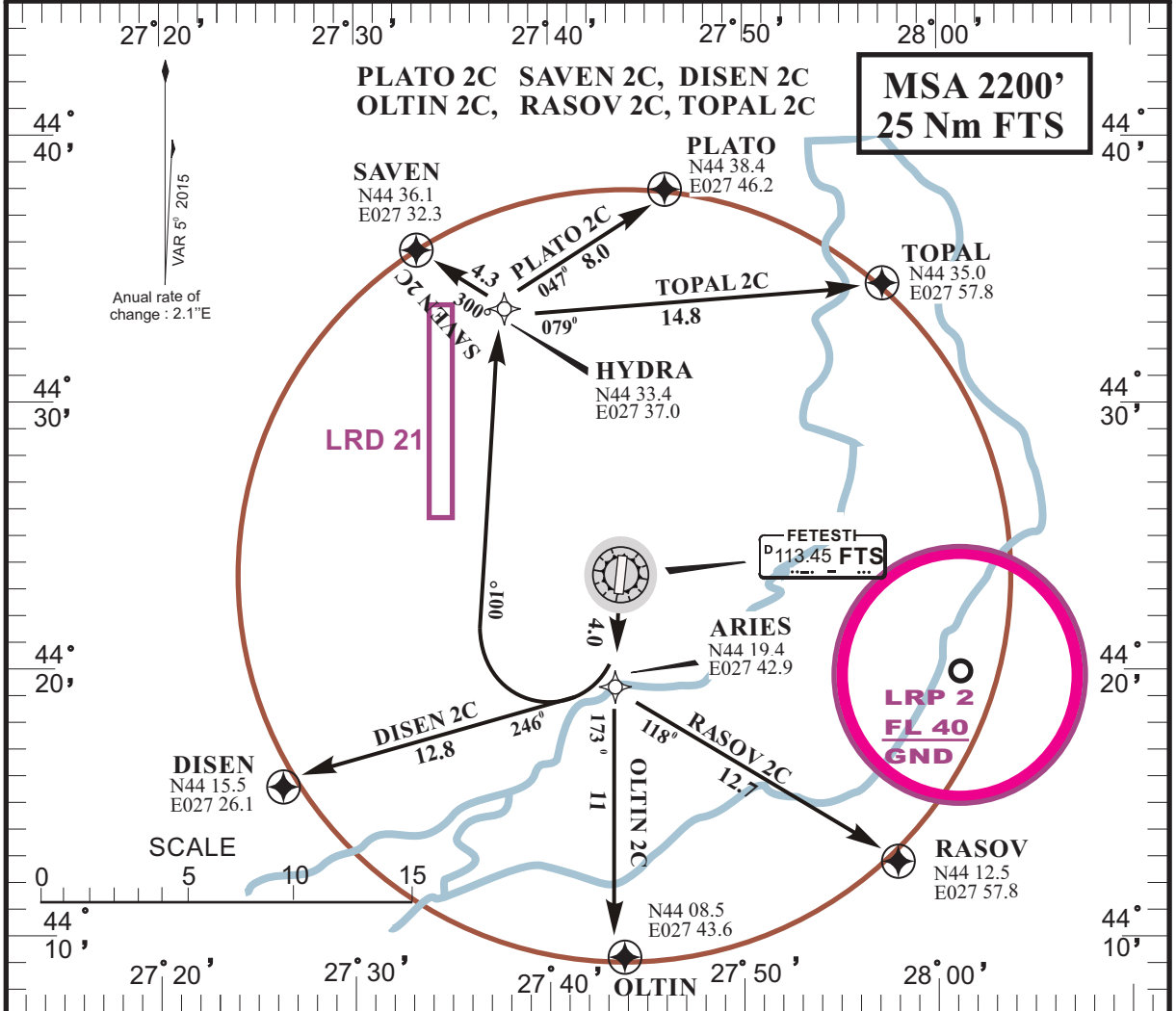


LRFT/FTS
BORCEA-FETESTI

FETEȘTI, ROMANIA
RNAV SID RWY 18

RUBIN INFO 130.800 /240.600ALT		RUBIN CONTROL 130.800	RUBIN APP 123.375 /309.625	RUBIN TWR/GND 119.325 /232.850	ATIS 122.525
VOR FTS 113.45	TAC FTM CH37Y	Trans Altitude: 4000' Trans Level: by ATC		Ad Elev 183'	LDA 8200' (2500 m)



DEPARTURE ROUTE DESCRIPTION

PLATO 2C	After take-off climb on runway heading inbound ARIES and turn right on track 001° climbing to FL050 inbound HYDRA then turn right on track 047° inbound PLATO .
SAVEN 2C	After take-off climb on runway heading inbound ARIES and turn right on track 001° climbing to FL050 inbound HYDRA then turn left on track 300° inbound SAVEN .
DISEN 2C	After take-off climb on runway heading inbound ARIES and turn right on track 246° climbing to FL050 inbound DISEN .
OLTIN 2C	After take-off climb on runway heading inbound ARIES and turn left on track 173° climbing to FL050 inbound OLTIN .
RASOV 2C	After take-off climb on runway heading inbound ARIES and turn left on track 118° climbing to FL050 inbound RASOV .
TOPAL 2C	After take-off climb on runway heading inbound ARIES and turn right on track 001° climbing to FL050 inbound HYDRA then turn right on track 079° inbound TOPAL .